

Reduced Glare

VECO

DOWNLIGHT SERIES

A series of downlights with a simplistic design that is available in various sizes, shapes, and finishing. Incorporating ELR's signature modular concept design, LED modules are fully interchangeable with various choices to provide optimal illumination for all kinds of spaces.



Future proof with upgradeable module



Multiple accessories options

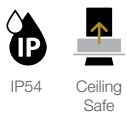


Trim thickness < 2mm



Fixture size of a tennis ball Ø68mm

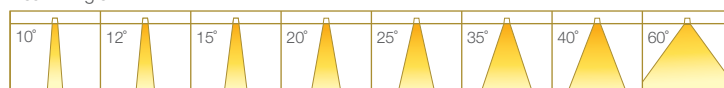
Fixture Features



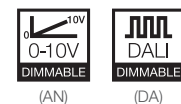
Module Colour Temperature Variation



Beam Angle

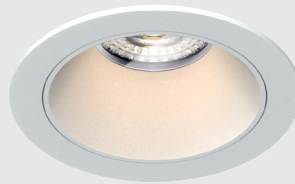


Driver Dimming Variation



VECO 3 65

RECESSED ROUND FIX DOWNLIGHT LUMINAIRE




#ROUND
#FIX
#TRIM
#IP65



#ROUND
#FIX
#TRIM
#IP65

TECHNOLOGY AND FEATURES




ATePS
Advanced Thermal
Protection System



ComfyEYE
Low Flicker,
No Risk
(IEEE 1789)



BEAM
Converging Optical Lens
Maximising LOR



Ceiling
Safe

AVAILABLE OPTIONS

FIXTURE COLOUR OPTIONS	Trim Colour Options	Reflector Colour Options				
		MATT WHITE RAL9003	MATT BLACK RAL9011	CHROME	CHROME BLACK	CHROME GOLD
MATT WHITE RAL9003						
MATT BLACK RAL9011						

ACCESSORIES
Honeycomb Anti-Glare Louvre Soft Lens Linear Spread Lens Comfort Pro MR16 Holder GU10 Holder

LED MODULE	LED MODULE TYPES										Beam Angles				
	50PM/CM	50P/C	35P	50N	35N	COIN	35P-HI	50N-HI	35N-HI	COIN-HI	MR16/GU10	10°	20°	35°	60°
*Drivers for 24CV LED modules are sold separately.	SINGLE CCT 2700K 3000K 3500K 4000K 5000K		ProART ProART98		50PM / 50CM / 50P / 50C / 35P / 50N / 35N / COIN 35P-HI / 50N-HI / 35N-HI / COIN-HI						✓	✓	✓	✓	
	ComfySHIFT		ComfySHIFT		35P / 50N						✓	✓	✓	✓	
WARM DIM		WARM DIM		50P / 35P / 50N / 35N / COIN						✓	✓	✓	✓		
**tuneWHITE and flexiK are recommended to be paired with Soft Lens for better colour mixing effect.	tuneWHITE		tuneWHITE		50P / 50N / COIN							✓	✓	✓	
	flexiK		flexiK												
*Drivers for RGBW LED modules are sold separately.		RGBW		RGBW		50P								✓	✓

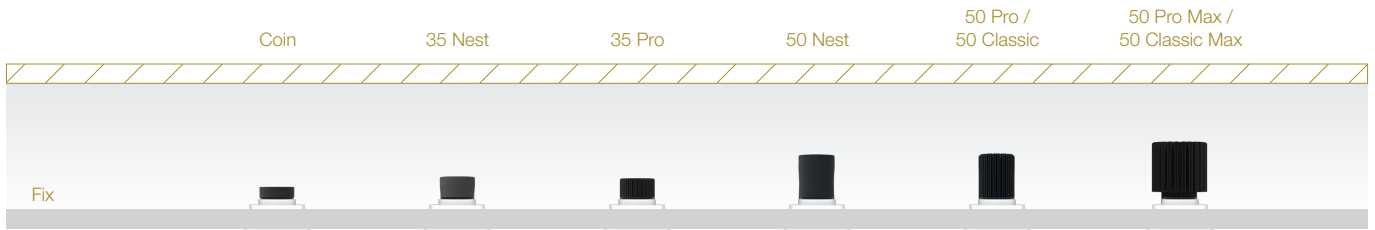
VECO 3

IP 65

#ROUND
#FIX
#TRIM
#TRIMLESS

SPECIFICATIONS

FITTURE	
Family Type	Veco series
Fixture Colours	Matt white, matt black
Reflector Colours	Matt white, matt black, chrome, chrome black, chrome gold
Fixture Materials	Aluminium
Accessories	Honeycomb anti-glare louvre, soft lens, linear spread lens, Comfort Pro
Ingress Protection	IP65 (Fixture Face Only)
LED MODULE & DRIVER	
Compatible LED Modules	50, 35, COIN series LED modules or MR16/GU10
Lifetime	Up to 50,000 hours L80 lamp life with LM80 tested LED chip packages
Beam Angles	10°, 20°, 35°, 60°
Colour Temperatures	2700K, 3000K, 3500K, 4000K, 5000K, ComfySHIFT, Warm Dim, tuneWHITE, flexiK, RGBW
CRI	High Efficiency (CRI-85), ProART (CRI-95), ProART98 (CRI-98)
Driver (Dimming)	Non-dim, phase (leading & trailing edge), 0-10V, DALI



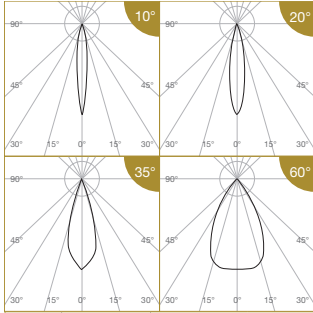
DIMENSIONS (MM)																									
ROUND	Trim Ø97	Trimless Ø83	Fix (h)																						
	<p>Trim: Ø90 Trimless: Ø83 cutout</p>																								
		<table border="1"> <thead> <tr> <th colspan="2">Height (h)</th> </tr> <tr> <th>Module</th> <th>Fix</th> </tr> </thead> <tbody> <tr> <td>50PM / 50CM:</td> <td>128</td> </tr> <tr> <td>50P / 50C:</td> <td>111</td> </tr> <tr> <td>50N:</td> <td>108</td> </tr> <tr> <td>35P / 35N:</td> <td>82</td> </tr> <tr> <td>COIN:</td> <td>58</td> </tr> <tr> <td>50N-HI:</td> <td>118</td> </tr> <tr> <td>35P-HI / 35N-HI:</td> <td>92</td> </tr> <tr> <td>COIN-HI:</td> <td>68</td> </tr> <tr> <td>MR16 / GU10</td> <td>82</td> </tr> </tbody> </table>		Height (h)		Module	Fix	50PM / 50CM:	128	50P / 50C:	111	50N:	108	35P / 35N:	82	COIN:	58	50N-HI:	118	35P-HI / 35N-HI:	92	COIN-HI:	68	MR16 / GU10	82
Height (h)																									
Module	Fix																								
50PM / 50CM:	128																								
50P / 50C:	111																								
50N:	108																								
35P / 35N:	82																								
COIN:	58																								
50N-HI:	118																								
35P-HI / 35N-HI:	92																								
COIN-HI:	68																								
MR16 / GU10	82																								
		<p>Height increase with accessories:</p> <ul style="list-style-type: none"> Anti-Glare Louvre : Height +6 Soft Lens : Height +3 Linear Spread Lens : Height +3 Comfort Pro : Height +20 <p>(refer to module driver dimensions)</p>																							

VECO 3 65

PHOTOMETRICS



50 PRO



Height (m)		E _{max} (lx)			
		10°	20°	35°	60°
1	E(0°)	8185	5304	3119	1206
	Cone Ø (m)	0.19	0.34	0.60	1.15
2	E(0°)	2046	1326	780	301
	Cone Ø (m)	0.38	0.68	1.19	2.30
3	E(0°)	909	589	347	134
	Cone Ø (m)	0.57	1.03	1.79	3.45
4	E(0°)	512	331	195	75
	Cone Ø (m)	0.76	1.37	2.38	4.60
5	E(0°)	327	212	125	48
	Cone Ø (m)	0.95	1.71	2.98	5.75

Correction Factor:

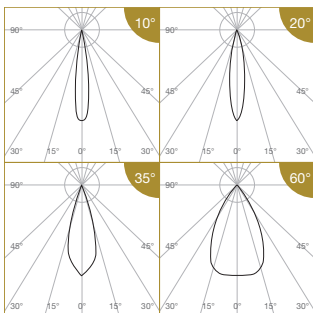
50P (10°) - f = 1.00	50P (20°; 35°; 60°) - f = 1.00
50C (10°) - f = 0.78	50C (20°; 35°; 60°) - f = 0.80
35P (10°) - f = 0.62	35P (20°; 35°; 60°) - f = 0.71
50N (10°) - f = 0.58	50N (20°; 35°; 60°) - f = 0.63
35N (10°) - f = 0.42	35N (20°; 35°; 60°) - f = 0.47
COIN (10°) - f = 0.35	COIN (20°; 35°; 60°) - f = 0.38
50PM (10°) - f = 1.69	50PM (20°; 35°; 60°) - f = 1.73
50CM (10°) - f = 1.37	50CM (20°; 35°; 60°) - f = 1.40
50P-24CV (10°) - f = 0.75	50P-24CV (20°; 35°; 60°) - f = 0.70
50C-24CV (10°) - f = 0.62	50C-24CV (20°; 35°; 60°) - f = 0.57
35P-24CV (10°) - f = 0.48	35P-24CV (20°; 35°; 60°) - f = 0.49
COIN-24CV (10°) - f = 0.28	COIN-24CV (20°; 35°; 60°) - f = 0.27

ELR LED Module				50P	50C	35P	50N	35N	COIN	50PM	50CM
LED Power				12W	10W	8W	7.5W	5.5W	4.5W	21W	17W
System Power				15.2W	12.8W	11W	10W	7.5W	6W	25W	21W
Luminous Flux (lm)	Type	Beam Angle	CRI								
	Single CCT (3000K)	10°	High Efficiency Ra-85	1079	847	672	623	457	374	1826	1477
			ProART Ra-95	917	720	572	530	388	318	1552	1256
			ProART98 Ra-98	755	593	471	436	320	261	1278	1034
		20°	High Efficiency Ra-85	1395	1116	995	884	651	530	2418	1953
			ProART Ra-95	1186	949	846	751	553	451	2055	1660
			ProART98 Ra-98	977	781	697	618	456	371	1693	1367
	35°	High Efficiency Ra-85	1410	1128	1006	893	658	536	2444	1974	
		ProART Ra-95	1199	959	855	760	559	456	2077	1678	
		ProART98 Ra-98	987	790	704	625	461	375	1711	1382	
	60°	High Efficiency Ra-85	1440	1152	1027	912	672	547	2496	2016	
ProART Ra-95		1224	979	874	776	571	466	2122	1714		
ProART98 Ra-98		1008	806	719	638	470	383	1747	1411		
Input Power (24CV)				12W	10W	8W			4.5W		
Luminous Flux (lm)	Type	Beam Angle	CRI								
	24CV Single CCT (3000K)	10°	High Efficiency Ra-85	805	664	523				307	
			ProART Ra-95	685	564	445				261	
			ProART98 Ra-98	564	465	366				215	
		20°	High Efficiency Ra-85	977	800	688				381	
			ProART Ra-95	830	680	585				325	
			ProART98 Ra-98	684	560	482				267	
	35°	High Efficiency Ra-85	987	808	696				385		
		ProART Ra-95	839	687	591				328		
		ProART98 Ra-98	691	566	487				270		
	60°	High Efficiency Ra-85	1008	826	710				394		
ProART Ra-95		857	702	604				335			
ProART98 Ra-98		706	578	497				276			

Data are based on 3000K (ProART CRI-95). Nominal data of 2700K and 3500K are shared with 3000K. Higher CCT of 4000K and 5000K will have a nominal data value of 5% higher than published. (f = 1.05)
 High Efficiency CRI-85 will have a nominal data value of 15% higher than published. (f = 1.17)
 ProART98 CRI-98 will have a nominal data value of 18% lower than published. (f = 0.82)

Nominal CRI-85, equals to Ra>80-87, R9>0
 Nominal CRI-95, equals to Ra>90-97, R9>50
 Nominal CRI-98, equals to Ra>97-99, R9>93

35 PRO ComfySHIFT



Height (m)		E _{max} (lx)			
		10°	20°	35°	60°
1	E(0°)	4295	3536	2079	804
	Cone Ø (m)	0.27	0.34	0.60	1.15
2	E(0°)	1074	884	520	201
	Cone Ø (m)	0.53	0.68	1.19	2.30
3	E(0°)	477	393	231	89
	Cone Ø (m)	0.80	1.03	1.79	3.45
4	E(0°)	268	221	130	50
	Cone Ø (m)	1.07	1.37	2.38	4.60
5	E(0°)	172	141	83	32
	Cone Ø (m)	1.33	1.71	2.98	5.75

Correction Factor: 35P CS - f = 1.00
 50N CS - f = 0.94

ELR LED Module				35P	50N
LED Power				8W	7.5W
System Power				11W	10W
Luminous Flux (lm)	Type	Beam Angle	CRI		
	ComfySHIFT (3100K)	10°	ProART Ra-95	706	664
				791	744
				799	752
				816	768

Data are based on maximum output at 3100K.
 Nominal CRI-95, equals to Ra>90-97, R9>50

VECO 3 65

PHOTOMETRICS



50 PRO WARM DIM

Height (m)		Emax (lx)				ELR LED Module																
		10°	20°	35°	60°	50P		35P	50N	35N	COIN											
1	E(0°)	6469	5325	3131	1211	LED Power		12W	8W	7.5W	5.5W	4.5W										
	Cone Ø (m)	0.27	0.34	0.60	1.15	System Power		15.2W	11W	10W	7.5W	6W										
2	E(0°)	1617	1331	783	303	Luminous Flux (lm)	Type	Beam Angle	CRI	1062	706	664	490	398								
	Cone Ø (m)	0.53	0.68	1.19	2.30																	
3	E(0°)	719	592	348	135										Warm Dim (3100K)	10°	ProART Ra-95	1190	791	744	549	446
	Cone Ø (m)	0.80	1.03	1.79	3.45													1203	799	752	555	451
4	E(0°)	404	333	196	76													35°	1229	816	768	566
	Cone Ø (m)	1.07	1.37	2.38	4.60	60°																
5	E(0°)	259	213	125	48																	
	Cone Ø (m)	1.33	1.71	2.98	5.75																	

Correction Factor: 50P WD - f = 1.00
 35P WD - f = 0.66
 50N WD - f = 0.63
 35N WD - f = 0.46
 COIN WD - f = 0.38

Data are based on maximum output at 3100K.
 Nominal CRI-95, equals to Ra>90-97, R9>50

50 PRO tuneWHITE/flexiK

Height (m)		Emax (lx)			ELR LED Module												
		20°	35°	60°	50P		50N	COIN									
1	E(0°)	4160	2446	946	LED Power		12W	7.5W	4.5W								
	Cone Ø (m)	0.34	0.60	1.15	System Power		15.2W	10W	6W								
2	E(0°)	1040	612	236	Luminous Flux (lm)	Type	Beam Angle	CRI	930	558	335						
	Cone Ø (m)	0.68	1.19	2.30													
3	E(0°)	462	272	105								tuneWHITE/flexiK (4000K / 6500K)	20°	ProART Ra-95	940	564	338
	Cone Ø (m)	1.03	1.79	3.45											960	576	346
4	E(0°)	260	153	59											35°		
	Cone Ø (m)	1.37	2.38	4.60	60°												
5	E(0°)	166	98	38													
	Cone Ø (m)	1.71	2.98	5.75													

Correction Factor: 50P TW / FK - f = 1.00
 50N TW / FK - f = 0.60
 COIN TW / FK - f = 0.36

Data are based on maximum output at highest CCT (4000K / 6500K).
 2700K will have a nominal data value of 10% lower than published. (f = 0.90)
 1800K will have a nominal data value of 30% lower than published. (f = 0.70)
 Nominal CRI-95, equals to Ra>90-97, R9>50

50 PRO RGBW

Height (m)		Emax (lx)		ELR LED Module							
		35°	60°	50P							
1	E(0°)	1480	572	LED Power		12W					
	Cone Ø (m)	0.60	1.15	System Power		15.2W					
2	E(0°)	370	143	Luminous Flux (lm)	Type	Beam Angle	CRI				
	Cone Ø (m)	1.19	2.30								
3	E(0°)	164	64					RGBW	35°	N/A	569
	Cone Ø (m)	1.79	3.45								581
4	E(0°)	93	36								60°
	Cone Ø (m)	2.38	4.60								
5	E(0°)	59	23								
	Cone Ø (m)	2.98	5.75								

Data are based on maximum output of all 4 RGBW channels.

35 PRO HIGH INTENSITY

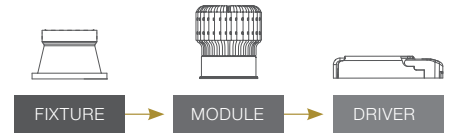
Height (m)		Emax (lx)	ELR LED Module														
		10°	35P-HI	50N-HI	35N-HI	COIN-HI											
1	E(0°)	10860	LED Power		8W	7.5W	5.5W	4.5W									
	Cone Ø (m)	0.19	System Power		11W	10W	7.5W	6W									
2	E(0°)	2715	Luminous Flux (lm)	Type	Beam Angle	CRI	587	552	405	329							
	Cone Ø (m)	0.37															
3	E(0°)	1207									Single CCT (3000K)	10°	High Efficiency Ra-85	499	469	344	280
	Cone Ø (m)	0.56												411	386	284	231
4	E(0°)	679												ProART98 Ra-98			
	Cone Ø (m)	0.74															
5	E(0°)	434															
	Cone Ø (m)	0.93															

Correction Factor: 35P-HI - f = 1.00
 50N-HI - f = 0.94
 35N-HI - f = 0.69
 COIN-HI - f = 0.56

Reduced Glare

VECO 3 IP 65

MODULAR CONCEPT



ORDERING MATRIX CHART

Fixture												
Type	Trim Options		Shape		Angle		Colour		Reflector Colour		Accessories	
VECO-3.IP65	T	Trim	RD	Round	FX	Fix	WH	Matt White	WH	Matt White	N	None
	X	Trimless										
								MB	Matt Black	MB	Matt Black	AGL
									CR	Chrome	SL	Soft Lens
									CB	Chrome Black	LSL	Linear Spread Lens
									CG	Chrome Gold	CP	Comfort Pro
											CMB	COIN Module Bracket****
											MR16	MR16 Holder
											GU10	GU10 Holder

****COIN Module Bracket accessory is necessary when paired with COIN LED module variants.

Single CCT LED Module					Driver				
LED Power		Beam Angle		Colour Temp	CRI		Dimming		
ELR50PM	21W	10	10°	27	2700K	HE	Ra-85	ND	Non-Dim
ELR50CM	17W	20	20°	30	3000K	PA	ProART	PH	Phase
ELR50P	12W	35	35°	35	3500K	PP	ProART98	AN	0-10V
ELR50C	10W	60	60°	40	4000K			DA	DALI
ELR35P	8W			50	5000K				
ELR50N	7.5W								
ELR35N	5.5W								
ELRCOIN	4.5W								
ELR35P-HI	8W	NS	10°	27	2700K	HE	Ra-85	ND	Non-Dim
ELR50N-HI	7.5W			30	3000K	PA	ProART	PH	Phase
ELR35N-HI	5.5W			35	3500K	PP	ProART98	AN	0-10V
ELRCOIN-HI	4.5W			40	4000K			DA	DALI
				50	5000K				
ELR50P-24CV	12W	10	10°	27	2700K	HE	Ra-85		
ELR50C-24CV	10W	20	20°	30	3000K	PA	ProART		
ELR35P-24CV	8W	35	35°	35	3500K	PP	ProART98		
ELRCOIN-24CV	4.5W	60	60°	40	4000K				
				50	5000K				

*Drivers for 24CV LED modules are sold separately.

Warm Dim LED Module					Driver				
LED Power		Beam Angle		Colour Temp	CRI		Dimming		
ELR50P	12W	10	10°	WD	Warm Dim	PA	ProART	PH	Phase
ELR35P	8W	20	20°					AN	0-10V
ELR50N	7.5W	35	35°					DA	DALI
ELR35N	5.5W	60	60°						
ELRCOIN	4.5W								

tuneWHITE LED Module						Driver			
LED Power		Beam Angle		Colour Temp		CRI		Dimming	
ELR50P	12W	20	20°	TW1831	tuneWHITE 1800K-3100K	PA	ProART	DA	DALI
ELR50N	7.5W	35	35°	TW1840	tuneWHITE 1800K-4000K				
ELRCOIN	4.5W	60	60°	TW2765	tuneWHITE 2700K-6500K				

flexiK LED Module					Driver				
LED Power		Beam Angle		Colour Temp	CRI		Dimming		
ELR50P	12W	20	20°	FK##	flexiK	PA	ProART	PH	Phase
ELR50N	7.5W	35	35°					AN	0-10V
ELRCOIN	4.5W	60	60°					DA	DALI

denotes the first two digits of preferred CCT ranging from 1800K to 6500K by increment of 100K.

ComfySHIFT LED Module					Driver				
LED Power		Beam Angle		Colour Temp	CRI		Dimming		
ELR35P	8W	10	10°	CS	ComfySHIFT	PA	ProART	ND	Non-Dim
ELR50N	7.5W	20	20°						
		35	35°						
		60	60°						

RGBW LED Module					
LED Power		Beam Angle		Colour Temp	
ELR50P	12W	35	35°	RGBW	Red, Green, Blue, White
		60	60°		

*Drivers for RGBW LED modules are sold separately.

example: VECO-3.IP65.T.RD.TL.WH.WH.N.ELR50P.60.27.PA.DA
*Custom RAL colour options available.